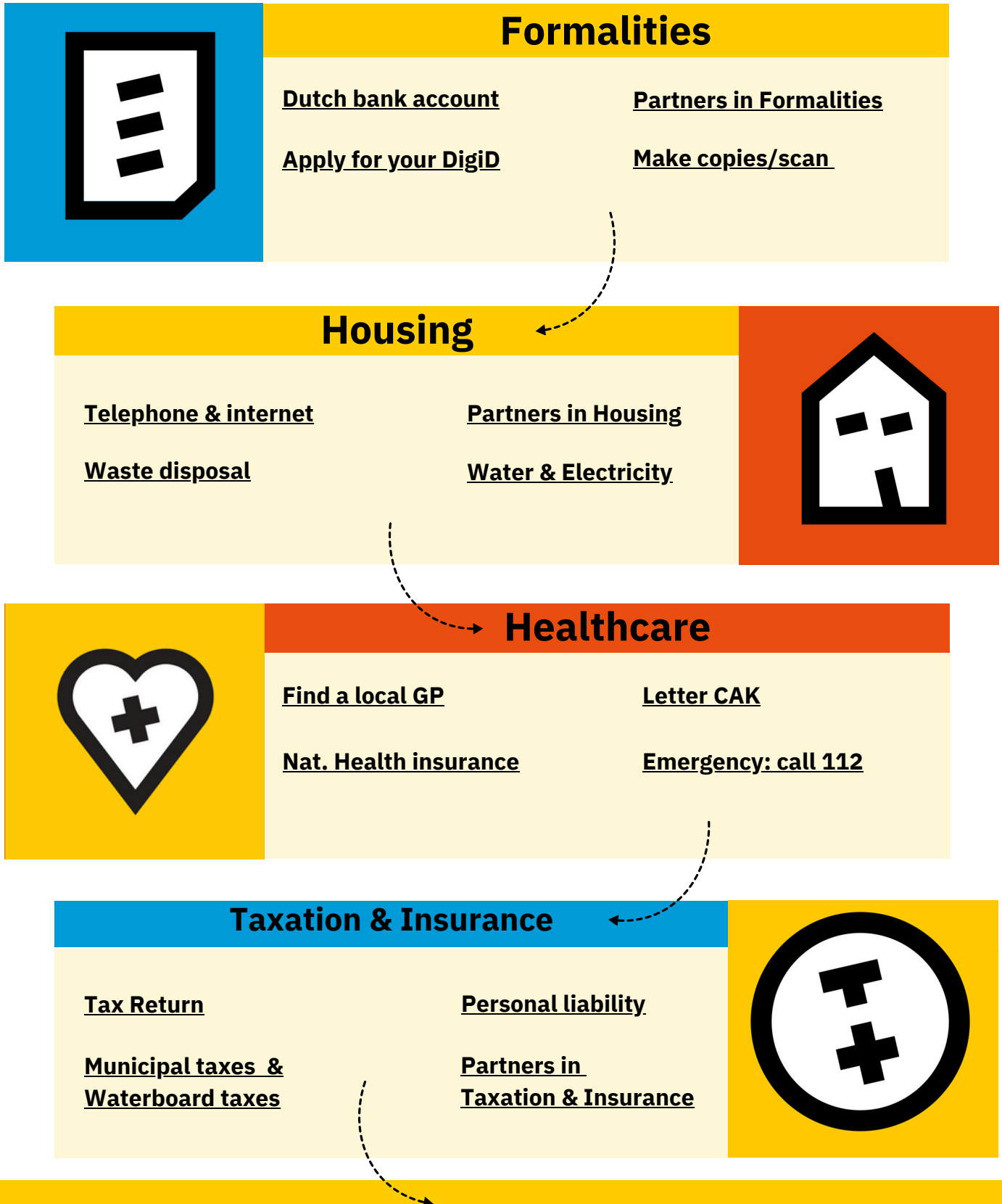


# ROADMAP

First of all, a very warm welcome to Maastricht Region! You have already finished the first steps relocating here: Registering with your new municipality and – if applicable: arranging your residence permit. Within the next 3-5 days you will receive your Citizen Service Number = BSN by post. What's next?



## Mobility & Transport



[Driving licence](#)

[9292.nl](#)

[Cycling](#)

[OVChip / OVPay](#)

[Public Transport](#)

[Partners in Mobility](#)

## Education & Careers

[Working in NL](#)

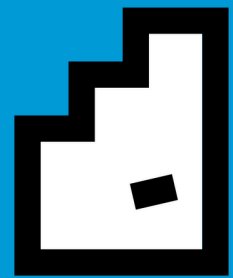
[Starting a business](#)

[Orientation year](#)

[International school](#)

[Educational system](#)

[Partners in Education](#)



## Personal & Social



[Language courses \(Dutch\)](#)

[Social groups](#)

[Childcare](#)

[Volunteering](#)

[Apply for child benefit](#)

[Pets](#)

## Culture & Leisure

[Explore the Maastricht Region](#)

[Partners in Culture & Leisure](#)

[Sights & Museums](#)

[Public Holidays](#)

